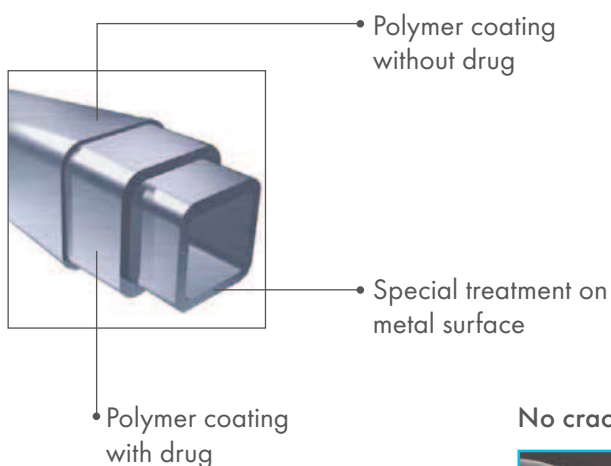
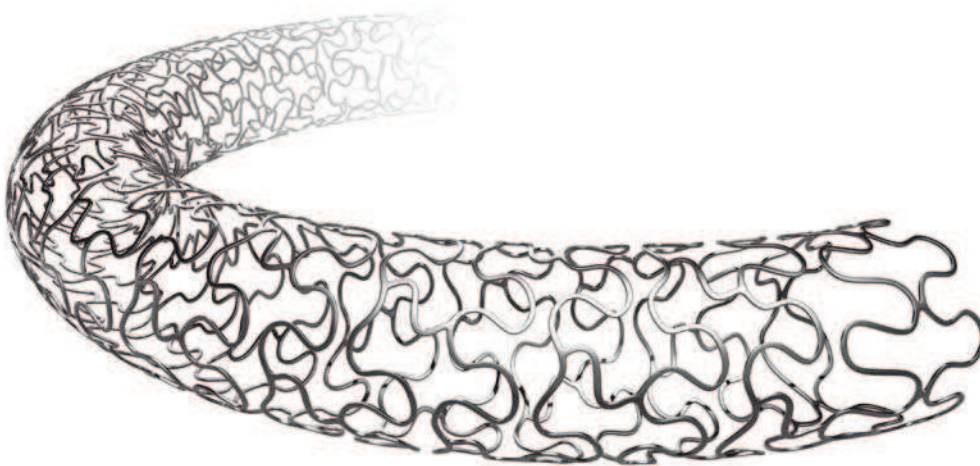


# Miranda™

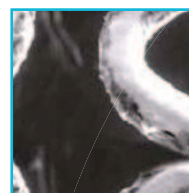
## Sirolimus-Eluting Coronary Stent



### No crack-bridging surface



Microscopic view of Miranda



Microscopic view of competitor

## Product Information

### Features

- Flexible stent design
- Sinusoidal wave + 3-3-3 link design
- Optimal strut thickness
- Ultra smooth surface
- High radial force
- PBMA/PEVA polymer
- Sirolimus Drug Eluting
- Semi compliant delivery system

### Sizing

- 90 µm stainless steel
- 6 µm polymer layer
- Metal-artery ratio: 15 to 18%
- Ø 2.5- to 4.0 mm
- L: 12 to 36 mm
- Lowest crossing profile: 0.035"
- Nom. Inflation Pressure: 8 atm
- Recoil: < 2%

### Benefits

- Easy positioning and placement
- Optimal tissue scaffolding
- No crack-bridging surface
- Side branch protection
- Significant reduction of restenosis
- Proven concept
- Easy stent re-crossing

### Extra

- Long stent length up to 36 mm
- Customised stent length

# Technical Information

## Miranda™ Sirolimus-Eluting Coronary Stent

Drug	Rapamycin (Sirolimus)
Material	Stainless Steel
Strut thickness	90 µm
Polymer thickness	6 µm
Polymer	PBMA/PEVA
Metal-artery ratio	15-18%
Delivery system	RX
Balloon tip profile	0.017"
Lowest crossing profile	0.035"
Nominal inflation pressure	8 atm
Stent recoil	< 2%

# Ordering Information

## Miranda™ Sirolimus-Eluting Coronary Stent

Stent Length (mm)	2.5	2.75	Balloon Length (mm) 3.0	3.5	4.0
12	CSES2512	CSES2712	CSES3012	CSES3512	CSES4012
15	CSES2515	CSES1715	CSES3015	CSES3515	CSES4015
18	CSES2518	CSES2718	CSES3018	CSES3518	CSES4018
21	CSES2521	CSES3721	CSES3021	CSES3521	
24	CSES2524	CSES2724	CSES3024	CSES3524	
29	CSES2529	CSES2729	CSES3029	CSES3529	
33	CSES2533	CSES2733	CSES3033	CSES3533	
36	CSES2536	CSES2736	CSES3036	CSES3536	

Additional stent lengths of 21, 24, 29, 33 and 36 mm in 4.0 mm diameter

Minimum order quantity: 10 units

Customised products: please contact Comed BV or our Comed Alliance Group member for customised length and diameter